

EMERALD COAST MILITARY INSTALLATION RESILIENCY REVIEW

Project Kickoff Meeting

April 26, 2022



AGENDA



WELCOME & TEAM INTRODUCTIONS

Austin Mount

PROJECT & GRANT HISTORY

Austin Mount

SPEAKER Captain Paul Flores

SPEAKER Jim Bagby

SPEAKER Dale Marks

SPEAKER Susy Torriente

PROJECT SCOPE OVERVIEW

Daryal Danley / Tanya Gallagher

MISSION OF THE TAC, PAC, & FUTURE MEETINGS

Eric Christianson

SITE VISITS

Daryal Danley

Q&A SESSION

BREAK

PROJECT VISIONING EXERCISE

VISIONING EXERCISE REPORT OUT

ADJOURN





- Two-Year (+) Journey for Northwest Florida
- Recognized Need to Align & Coordinate Civilian/Military Community Resilience Efforts
- Unique Assets & Interdependencies
 - Naval Air Station Pensacola
 - Naval Air Station Whiting Field
 - Eglin Air Force Base
 - Hurlburt Field
 - Naval Support Activities
 - Tyndall Air Force Base
- State & DoD Partnership
 - Florida Defense Support Task Force
 - Office of Local Defense Community Cooperation
- Regional Council Model Replicated
 - Tampa Bay RPC – MacDill AFB
 - South Florida RPC
 - East Central Florida RPC
 - Northeast Florida RPC



Keynote Speaker:

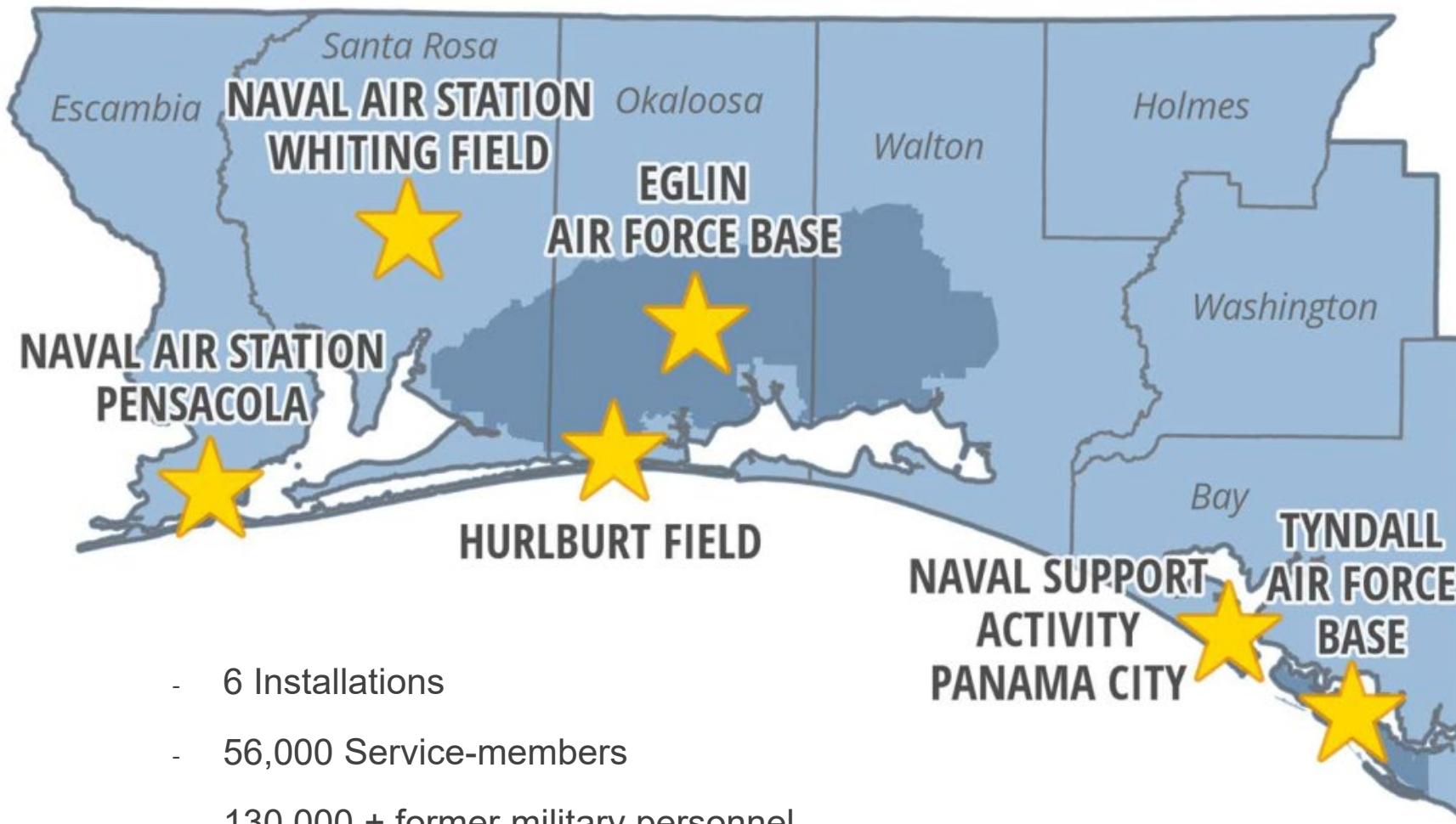
Captain Paul Flores

Commanding Officer NAS Whiting Field

Keynote Speaker:

Jim Bagby

District Director, Representative Matt Gaetz



- 6 Installations
- 56,000 Service-members
- 130,000 + former military personnel

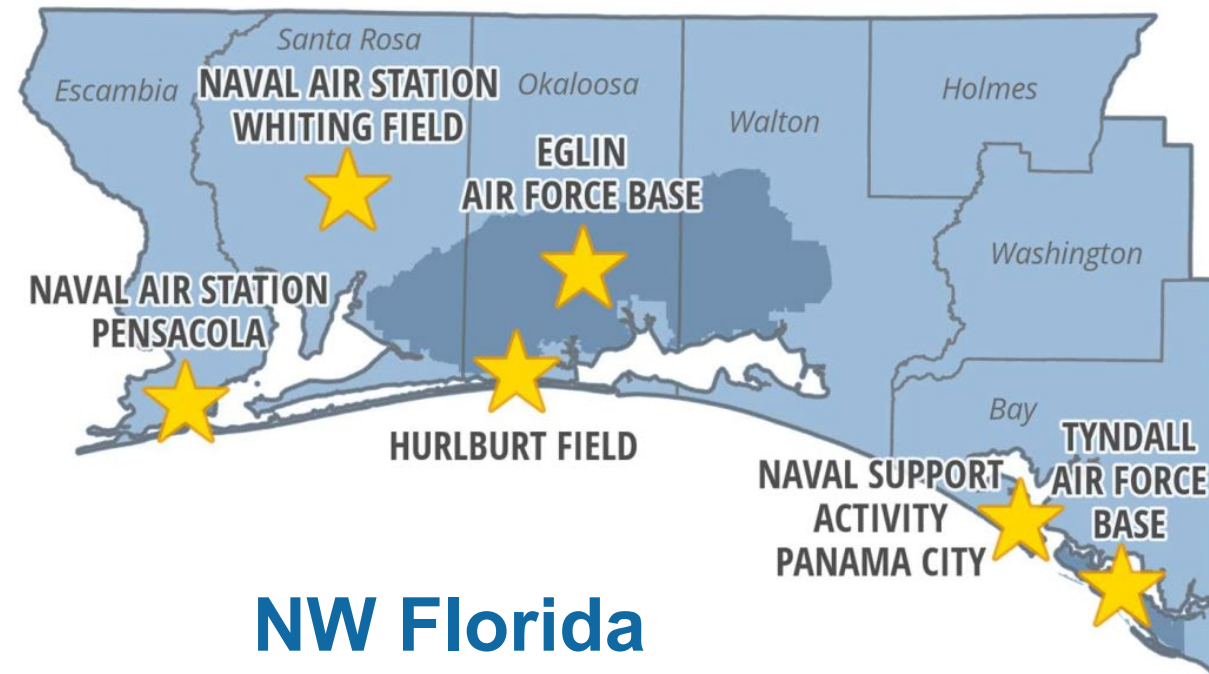
- Home to one of the highest concentrations of active duty and civilian military personnel, veterans and military retirees in the nation.
- Expansive joint flight and munitions Testing & Training Ranges over water and land

ANNUAL DEFENSE ECONOMIC IMPACTS

Austin Mount

Florida

- \$97 Billion
- 900K Jobs



NW Florida

- \$22 Billion
- 200K Jobs
- 33% of GRP in Region



Keynote Speaker:

Dale Marks

Vice Director 96th Test Wing, Eglin AFB

Keynote Speaker:

Susy Torriente

Former Miami Beach CRO, Jacobs



About Me: Resilience Planning Experience

- ✓ *Resilient 305*
- ✓ Miami Beach Strategic Plan through the Lens of Resilience
- ✓ Miami Beach 2040 Comprehensive Plan Update
- ✓ Southeast Florida Regional Climate Action Plan & 2.0
- ✓ *Fast Forward Fort Lauderdale, Our City Our Vision, 2035*
- ✓ *Press Play Fort Lauderdale, Our City, Our Strategic Plan*
- ✓ Adaptation Action Areas Planning Guidebook, Fort Lauderdale Case Study
- ✓ Southeast Florida Regional Climate Action Plan
- ✓ *Miami-Dade County GreenPrint: Our Design for a Sustainable Future*



IMPORTANCE OF ENGAGEMENT & LESSONS FROM SOUTH FLORIDA MIRR:

Mission assurance through community resilience



Supports Mission Assurance - Promotes Resilient Communities - Fosters Regional Cooperation

PLANNING + ENGAGEMENT = FUTURE OUTSIDE FUNDING OPPORTUNITIES



An aerial photograph of a coastal area. In the foreground, there is a wide, light-colored sandy beach or dune area with sparse vegetation. To the left of the beach is a large body of water with a light blue-green hue. In the distance, a small, elongated island or peninsula is visible, also covered in sparse vegetation. The sky is a clear, pale blue with a few small, white clouds. The overall scene is bright and sunny.

PROJECT SCOPE OVERVIEW

MIRR PATHWAY TO IMPLEMENTATION

Daryal Danley



U.S. Department of Defense
Office of Local Defense
Community Cooperation



Jacobs

MIRR



Clearly defined
Opportunities
= Implementation
\$\$\$



Others



PROJECT & GRANT HISTORY



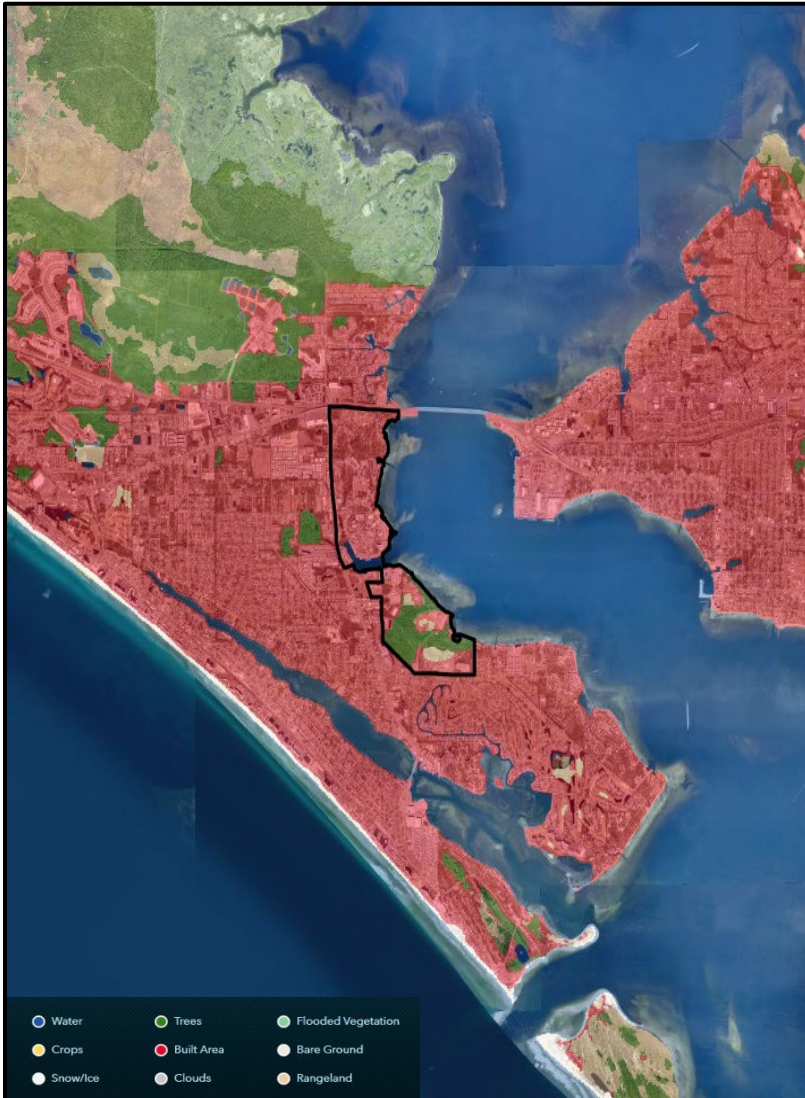
EMERALD COAST MILITARY INSTALLATION
RESILIENCY REVIEW

PROJECT KICK OFF MEETING & VISIONING



Military installation resilience is defined in 10 U.S.C. § 101(e)(8) as:

“The capability of a military installation to avoid, prepare for, minimize the effect of, adapt to, and recover from extreme weather events, or from anticipated or unanticipated changes in environmental conditions, that do, or have the potential to, adversely affect the military installation or essential transportation, logistical, or other necessary resources outside of the military installation that are necessary in order to maintain, improve, or rapidly reestablish installation mission assurance and mission essential functions.”



The purpose of the MIRR is to identify the risks, hazards, and vulnerabilities of concern as it relates to the ability of the military to carry out its missions on the installation that could be mitigated through investments and solutions ***outside the fence line in the community.***

2

Community Engagement & Workshops



Military Installation Resilience Review

Military Installation Resilience Review Data Collection Request

Please indicate the relevance of the listed assets, threats and hazards and ongoing efforts to the individual installations and list known sources, reference materials or geospatial files containing relevant information. Please submit available electronic data files with survey response.

Next

Powered by [ArcGIS Survey123](#)

Naval Air Station Pensacola, Escambia County

☐ Onsite, Dependent

☐ Offsite, Dependent

☐ Offsite, Adjacent

☐ None

Please send electronic files of studies, plans and geographic datasets relevant to the vulnerability and risk assessment for the Northwest Florida Military Installation Resilience Review through this survey Military Installation Resilience Review ([arcgis.com](#)). link **In a subsequent email from Jacobs, an Sharepoint link will be provided to the contact listed in the survey response for larger files.**

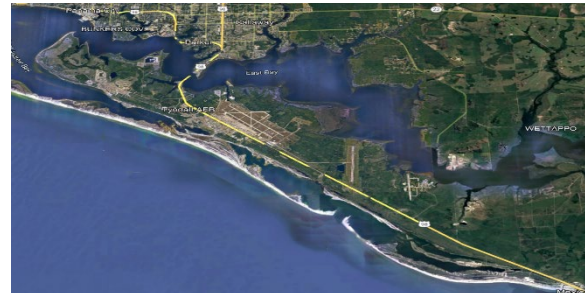
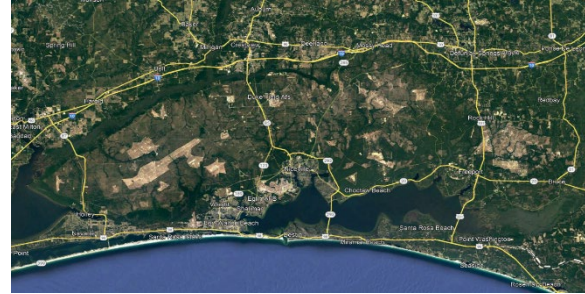
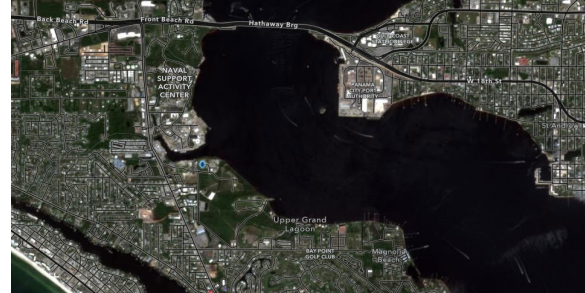
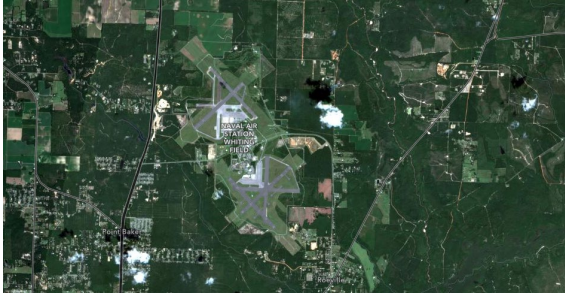
Data Contact Email

DATA REQUEST ONLINE SURVEY OR EMAIL

Types Of Data

- Will Be Public Record
- PDFs or GIS/ CAD files
- Installation Demographics
 - Missions/ Capabilities
 - Staffing
- Public Dependencies
 - Infrastructure, Assets
 - Community Facilities, Services
 - Housing, Resources
- Threats/ Hazards
- Operations/ Ongoing Projects
 - After Action Reports/ Plans
 - Relevant Studies





BUILDING UPON EXISTING WORK GIS Database

- Infrastructure, Utilities, Transportation
- Define Interdependencies Across Region
- Hazard Source Maps for Context

Define Study Area Boundaries Of Each Installation (Area Of Influence)

Identify Relevant Sectors

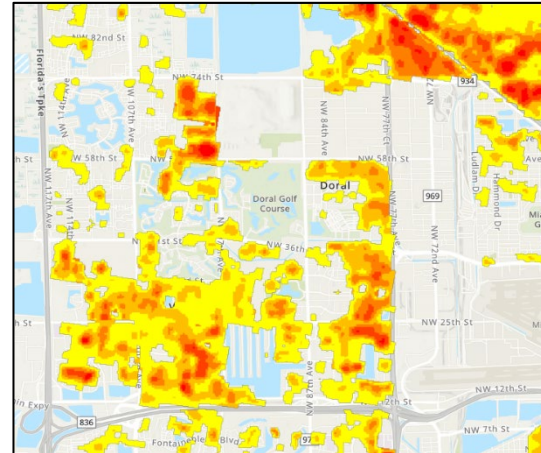
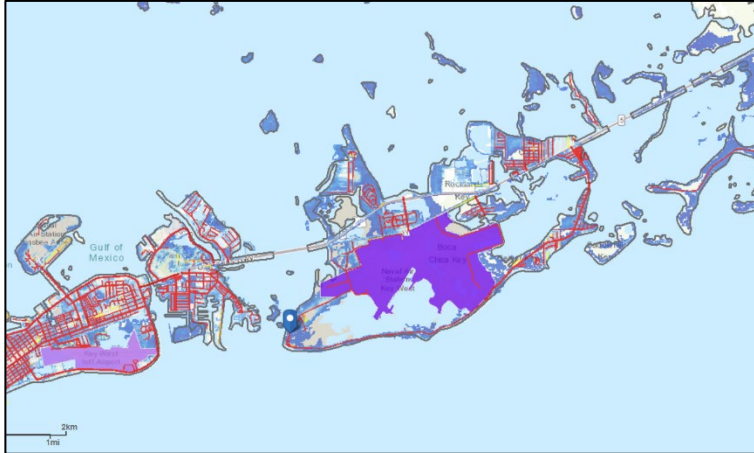
- Environmental, Social, Economic, Infrastructure and Military Installation Specific

Threat/ Hazard Assessment

- 2040, 2070
- Climate Scenarios

Assessment Standard Based On Stakeholder Resilience Criteria





Exposure Analysis

- Relevance of threats to sectors

Impact Analysis

- Rank vulnerabilities by sector/ feature

Adaptive Capacity Assessment

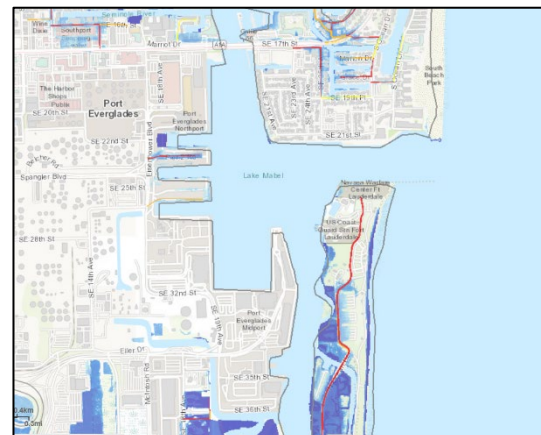
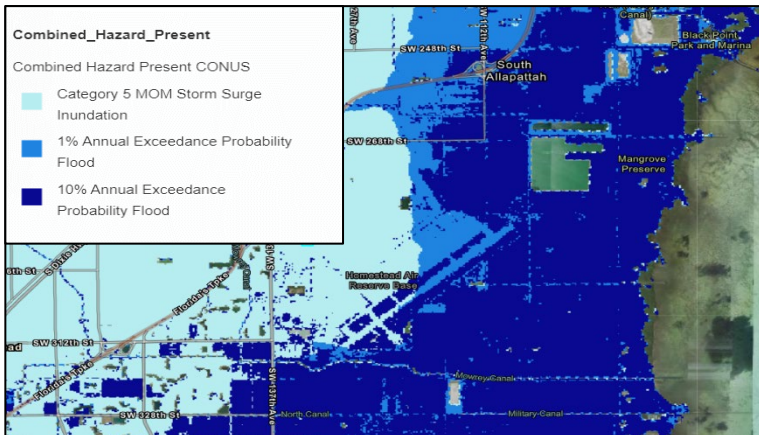
- Ability to adapt to scenarios
- Emergency response responsibilities/ capability

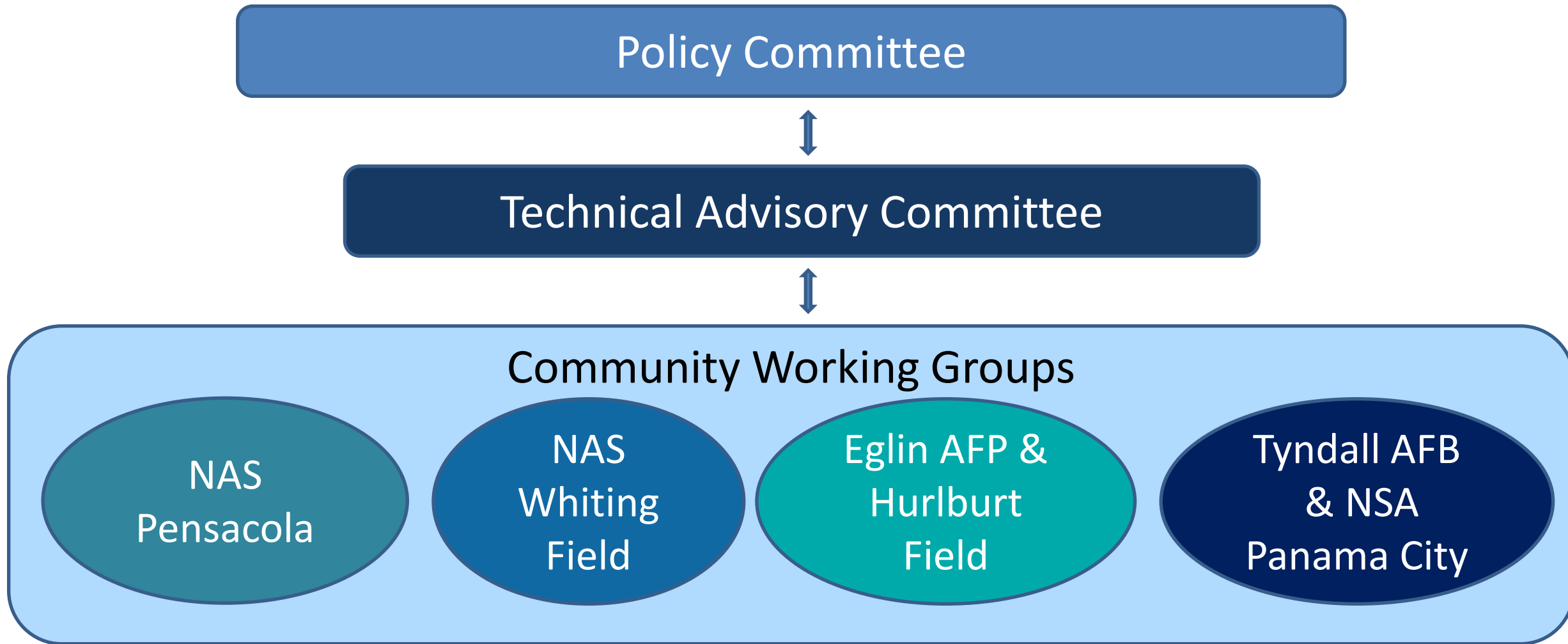
Risk Assessment

- Consequences to Installation

Qualitative And Quantitative Methods to Assess to Compare & Rank Vulnerabilities/ Risks

Combine With Working Group Input To Finalize Matrices





YOUR ROLE: MISSION OF THE POLICY ADVISORY COMMITTEE

Eric Christianson



The Policy Committee (PC) is comprised of installation and local government leadership and resilience professionals.

The PC will meet quarterly to provide overall oversight and guidance to the MIRR process.

Members of the PC will provide knowledge of local policies and procedures and help build buy-in for implementation of recommendations.

Thank you in advance for your support!



MISSION OF THE STUDY ADVISORY COMMITTEE

YOUR ROLE: MISSION OF THE TECHNICAL ADVISORY COMMITTEE

Eric Christianson



The Technical Advisory Committee (TAC) is comprised of installation and local government technical experts and resilience professionals.

The TAC will provide information and advice based on local knowledge, historical context and best available data on future conditions. The TAC will meet monthly; and members may be called upon individually for subject matter expertise.

Thank you in advance for your support!



MISSION OF THE STUDY ADVISORY COMMITTEE



EMERALD COAST MILITARY INSTALLATION
RESILIENCY REVIEW

PROJECT KICK OFF MEETING & VISIONING

YOUR ROLE: INTERGOVERNMENTAL SUPPORT AGREEMENTS (IGSAs)

Eric Christianson



Our local match for this grant consists of a \$162,000 grant from the Florida Defense Support Task Force.

Developing formal community partnerships among military installations and local communities to aid in the implementation of projects identified in the MIRR.

- 1) Identify installation service needs
- 2) **Understand community abilities to meet needs**
- 3) Cost benefit analysis
- 4) Develop draft partnership agreements

Thank you in advance for your support!

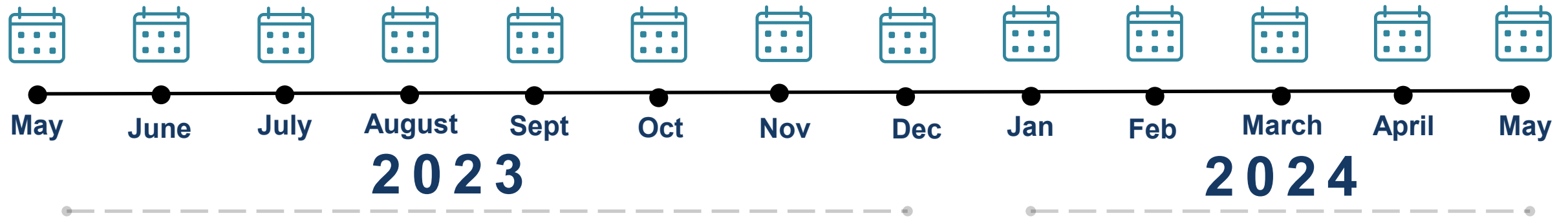


MISSION OF THE STUDY ADVISORY COMMITTEE



PROJECT KICK OFF MEETING & VISIONING

TAC Meetings - Monthly



PAC Meetings - Quarterly





INCLUDES

- Working Group Workshops
- Site Tours
- Meet with Municipal & 3rd Party Stakeholders

TO COLLECT

- Historic Onsite Flooding (Sources)
 - Compile Photos/ Anecdotes
- Onsite Utilities Non-Military Owned
- Infrastructure Interconnections (Areas of High Use)
- Facilities Dependent Upon Outside Resources
- Preliminary Feasibility of Typical Adaptation/ Mitigation Measures
- Verify Site/ Boundary Characteristics (Elevations, Natural Features)



PROJECT VISIONING EXERCISE



1. OVERVIEW
2. GOALS – to begin the process of documenting and visualizing military and community resilience by identifying issues and opportunities.
3. VISIONING SESSION BY INSTALLATION
 - Shocks / Stresses
 - Gaps
 - Opportunities
 - Priorities
4. SUMMARY & SYNTHESIS



5 - MINUTE BREAK

Thank You



Ada Clark, Community and Economic Development Director
Ada.Clark@ECRC.org

Eric Christianson, Planner
Eric.Christianson@ECRC.org

The logo for Jacobs, featuring the word "Jacobs" in a bold, black, sans-serif font.

Challenging today.
Reinventing tomorrow.

Daryal Danley, Project Manager
Daryal.Danley@jacobs.com

Tanya Gallagher, Deputy Project Manager
Tanya.Gallagher@jacobs.com